

Equipment AUCTION

Seller: Kenny Black

Sat., July 12, 2025 - 10 a.m.

Location: 19024 Homer Road, Bunker Hill, KS 67626

Directions: From I-70 Exit 189, go north 1 mile on 189th to Homer Road, then go 1 1/4 miles east to sale site.

From Bunker Hill, KS area, at 193rd St and Homer Road intersection, go 2 3/4 miles west to sale site.

From Russell, KS area, at Hwy 40 and Homer Road intersection, go 2 1/4 miles east to sale site.

Signs will be posted!

This auction will be simulcast online/live beginning at 11:00 AM, to register and bid, visit:
<https://schneiderauctionservice.hibid.com/auctions>



Tractors:

- 1971 John Deere 1020, SN 120130T, gas, canopy, radio, independent/live PTO, 24 hours with new tach, 14.9-28 rears
- 1971 John Deere 3020, SN 152249, diesel, 3 point, PTO, powershift console, dual remotes, excellent rubber, 15.5-38 rears, 6,000 hrs., tach quit, axles have been shortened
- 1971 John Deere 4020, SN 251753R, Roll Gard canopy, 3 remotes, 540/1000 PTO, 3 point, powershift console, diff lock, major overhaul, diesel, 18.4-34 rears, 2924 hrs. on new tach
- 1978 John Deere 4440, SN 010179R, powershift, 3 remotes, 540/1000 PTO, duals, 30" set up, 14.9R46 rears, cold AC, 8 front weights, 632 hrs. on new tach, new engine has less than 3,000 hrs.
- 2006 John Deere 5525, SN H258534, MFWD, 2,300 hrs., 3 remotes, PowrReverser Hi/Lo 24 speed transmission, PTO, 3 point, accumulator for front loader, loader joystick, 542 John Deere self-leveling loader, 7' bucket, skid steer mounts/quick attach, adjustable cutting edge

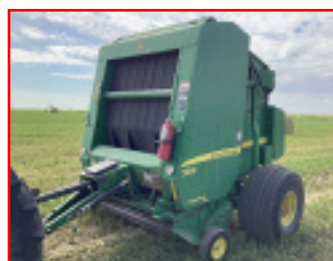
Harvesting Equip.:

- John Deere 920 flex head, 20', SN 661206, pickup reel, header control
- J & M header trailer



Equipment:

- DMI anhydrous applicator, 11 knives, 3 point, hyd fold or end transport, no till, Continental flow troll
- Ficklin 231 gravity wagon/tender, roll over tarp, swing auger, sits on JD 1075 running gear
- John Deere BD1113 grain drill, alfalfa box, double disc, stagger openers, acre meter, custom cover, press wheels, light package, 6" spacing, 26-6, excellent clean unit
- John Deere 4200 roll over plow, 4 bottom, in furrow
- John Deere 950 mulcher, 16', crow foot fronts, solid backs
- John Deere 1010 field cultivator, 24.5', new sweeps, narrow frame, coil tine harrows
- Krause tandem disc, 22', discs measure 20" front, 19.5" rears, Noble coil tine harrows, no welds



Hay Equipment:

- 1999 John Deere 4890 swather, SN 130201, 7,668 Eng. Hrs., 3805 Sep. hrs., cold AC, new injector pump, seat does leak, 890 John Deere 16' platform, twin knife
- John Deere 705 twin rake, SN A150084, new hyd. hoses, good teeth
- Kuhn 4120 MasterDrive Gyro rake, excellent cond.
- John Deere 348 square baler, SN TAGG420804, light kit, hyd swing, twine, 540 HD PTO, custom chamber, manual tension, multi luber, custom cover, and always shedded
- New Holland 1037 stack wagon, in cab controls, holds 105 bales, excellent condition
- Portable square bale back stop, nice unit
- John Deere 568 round baler, Mega Wide Plus, 540 PTO, SN 334569, twine and cover edge net, 9,197 bales, monitor
- John Deere 890, 18' parts platform

Misc. Equip.:

- John Deere 825i Gator, hyd bed lift, power steering, rally wheels, bench seat, windshield, 3,990 miles, 936 hours
- Load Trail flat deck trailer, 101" X 25' w/5' dove tail, dual jacks, dual tandem axles, flip over ramps, wood deck, winch, chain box, rear center pop up, 10,000 lb. axles, title
- 3020/4020 fenders
- 730 front grill/hood
- John Deere parts washer
- John Deere 158 loader, SN 047755, quick attach, mounting brackets
- 83" loader bucket, new
- 3 point bale spear
- 935 Vermeer chipper, gas Eng., SN 1VRD1055N1000535
- Herd 3-pt broadcaster, 540 PTO
- 4' chain drag harrow
- Like new cattle oiler
- John Deere 201 implement trailer, jack, boards and tires are decent

Like Us On Facebook!



Schneider Auction Service

Col. Jason Schneider, Auctioneer



Assisting Auctioneer: Col. John Kisner

785-650-BIDD (2433) Box 114, Schoenchen, KS 67667

Auctioneer's Note: The Blacks are moving and need to downsize and are offering some very clean usable items at public auction. Please plan to be on time as we may only have about an hour of small/trailer items then we will get on the bigger items at 11:00 right along with simulcast online items. For questions call Jason at 785-650-2433 or Kenny at 303-472-8120. Hope to see you at the auction!

Thanks ~Jason

Terms & Conditions: Cash – Approved Check W/Positive ID –Nothing removed Until Settled for - All Items Will be Sold "As-Is Where-Is" – Not Responsible for Accidents or Theft – Announcements Made Day of Sale Take Precedence Over Printed Material.

Credit Cards accepted: There will be a 4% Buyers Premium charged on all credit card purchases.



Schneider Auction Service

Box 114
Schoenchen, KS 67667